



MEGHALAYA BASIN MANAGEMENT AGENCY (MBMA)

C/o Meghalaya State Housing Financing Cooperative Society, Upper Nongrim Hills, Behind Bethany Hospital, Shillong, East Khasi Hills District, Meghalaya – 793003

(CIN No. U75144ML2012NPL008509); Phone: +91-364- 2522921/2522992

Website: www.mbda.gov.in, E-mail: admin.mbda@gov.in

CORRIGENDUM

(Notice No. MBMA/ Mission Ginger/ 81/ 2022-22/(Part-F) dated 10-12-2022)

Corrigendum No. 1

Date 23-12-2022

REQUEST FOR PROPOSAL (RFP) for –

For empanelment of agencies for installation, commissioning & maintenance of Cold Storage and Cold Room solutions in various locations of the State of Meghalaya, under the Meghalaya Basin Development Authority (MBMA)

The following provisions of the above-mentioned RFPs are hereby replaced as follows:

#	Clause No. & Name / RFP	Description of clause	Corrigendum/ Clarification
1.	Page 4, Section 1, under Background, paragraph 3	The type of Cold Storage solutions being promoted by the MBMA are from 5 MT to 20 MT capacity.	The type of Cold Storage solutions being promoted by the MBMA are Containerized or Non containerized 5 MT Cold storages to retrofitting of existing 300 sq. ft warehouses to 20 Mt cold storages.
2.	Page 10, Section 4, under Bid submission, Point 1.1	Processing Fee: Bidder must submit a processing fee of Rs. 5,000 in the form of a Demand draft.	Processing Fee: Bidder must submit a processing fee of Rs. 1,000 in the form of a Demand draft.
3.	Page 17, Annexure 1B – Technical Specification for Cold Storage solution of 20 MT, Subpart General Specification	<i>Type of structure (Wall, Floor, Roof)</i> 0.5 mm steel sheet PPGI with SS/polymers joineries and hardware	<i>Type of structure (Wall, Floor, Roof)</i> 0.45 mm steel sheet PPGI with SS/polymers joineries and hardware.
4.	Page 17, Annexure 1B – Technical Specification for Cold Storage	<i>Cold room insulation thickness</i> – 80-100mm	Existing Cold room insulation thickness - 60mm



MEGHALAYA BASIN MANAGEMENT AGENCY (MBMA)

C/o Meghalaya State Housing Financing Cooperative Society, Upper Nongrim Hills, Behind Bethany Hospital, Shillong, East Khasi Hills District, Meghalaya – 793003

(CIN No. U75144ML2012NPL008509); Phone: +91-364- 2522921/2522992

Website: www.mbda.gov.in, E-mail: admin.mbda@gov.in

#	Clause No. & Name / RFP	Description of clause	Corrigendum/ Clarification
	solution of 20 MT, Subpart General Specification		
5.	Page 17, Annexure 1B – Technical Specification for Cold Storage solution of 20 MT, Subpart General Specification	<i>Room Dimension</i>	Existing Room Dimension
6.	Page 22, Annexure 5 - Price Schedule, under Conditions, Table Line item Lot#1	Installation, Commissioning & Comprehensive Maintenance of DRE based Cold storage solutions of 20MT with a Hybrid Solar Inverter System	Retrofit Installation, Commissioning & Comprehensive Maintenance of DRE based Cold storage solutions of 20MT with a Hybrid Solar Inverter System. <i>(Existing Storehouse structure - Annexure I)</i>
7.	Page 22, Annexure 5 - Price Schedule, under Conditions, Table Line item Lot#2	Installation, Commissioning & Comprehensive Maintenance of DRE based Cold storage solutions of 5 MT with a Hybrid Solar Inverter System	Containerized or Non-Containerized Installation, Commissioning & Comprehensive Maintenance of DRE based Cold storage solutions of 5 MT with a Hybrid Solar Inverter System. (Technical specs as per MNRE Website – Annexure I)

Manager (Procurement)
Meghalaya Basin Management Agency



MEGHALAYA BASIN MANAGEMENT AGENCY (MBMA)

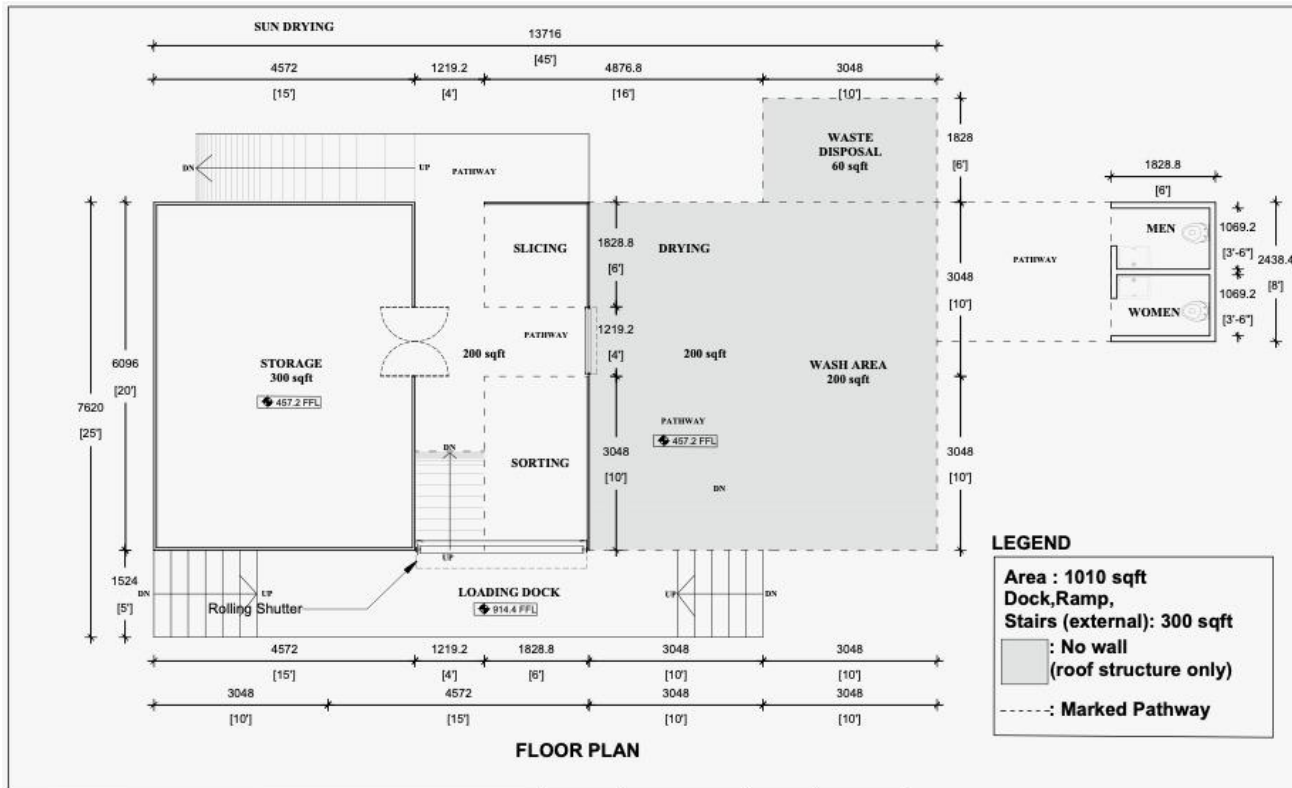
C/o Meghalaya State Housing Financing Cooperative Society, Upper Nongrim Hills, Behind Bethany Hospital, Shillong, East Khasi Hills District, Meghalaya – 793003

(CIN No. U75144ML2012NPL008509); Phone: +91-364- 2522921/2522992

Website: www.mbda.gov.in, E-mail: admin.mbda@gov.in

ANNEXURE I

- Pre- designed storage structure:** Dimension of 20x15x10ft (LxBxH), with 0.45mm PPGI sandwiched Sheet with 60mm PUF walls and roof, Plinth height 450mm, MS steel frame, RCC foundation and PCC flooring.



Add-ons required As per Vendor recommendation:

- 80mm PUF Slabs + TAR sheets (or) Metal sheet flooring on top of the existing PCC flooring.
- Heavy duty automatic PUF Doors(60mm) of dimension of 2100 X 900mm, with hinges, lock and temperature curtain.



MEGHALAYA BASIN MANAGEMENT AGENCY (MBMA)

C/o Meghalaya State Housing Financing Cooperative Society, Upper Nongrim Hills, Behind Bethany Hospital, Shillong, East Khasi Hills District, Meghalaya – 793003

(CIN No. U75144ML2012NPL008509); Phone: +91-364- 2522921/2522992

Website: www.mbda.gov.in, E-mail: admin.mbda@gov.in

Minimum Specifications and Requirements for Solar Cold Storage with Thermal Energy Storage Backup for 5MT and 10 MT Capacity

Particulars	Version 1	Version 2	Version 3	Version 4
Indicative Storage Capacity	5 MT	5 MT	10 MT	10 MT
Min Solar Photovoltaic Capacity	5 KWp	7 KWp	10 KWp	14 KWp
Min Thermal Backup	125 MJ	175 MJ	250 MJ	350 MJ
Min Compressor Capacity	2 TR	2 TR	4 TR	4 TR
Minimum Pre-cooling capacity only with thermal back-up	500 kg within 12 hours	750kg within 12 hours	1000 kg within 12 hours	1500 kg within 12 hours
Min Internal Volume of Cold Room	750 cuft	750 cuft	1500 cuft	1500 cuft
Insulation	100m PUF or 150mm EPS or equivalent			
Refrigerant	R407F / R134A or any other with Zero ODP and GWP <2000			
Operation of compressor power circuit	Compressor power line should not be operated using batteries			
Remote Monitoring	GPRS or Wifi Connectivity			
Remote Monitoring parameters	Cold Room temperature Cold Room humidity Ambient temperature Solar Energy Generation Grid Energy Consumption Compressor speed and on-off state			
Power Supply	Solar PV as well as grid with auto-switching based on power availability			